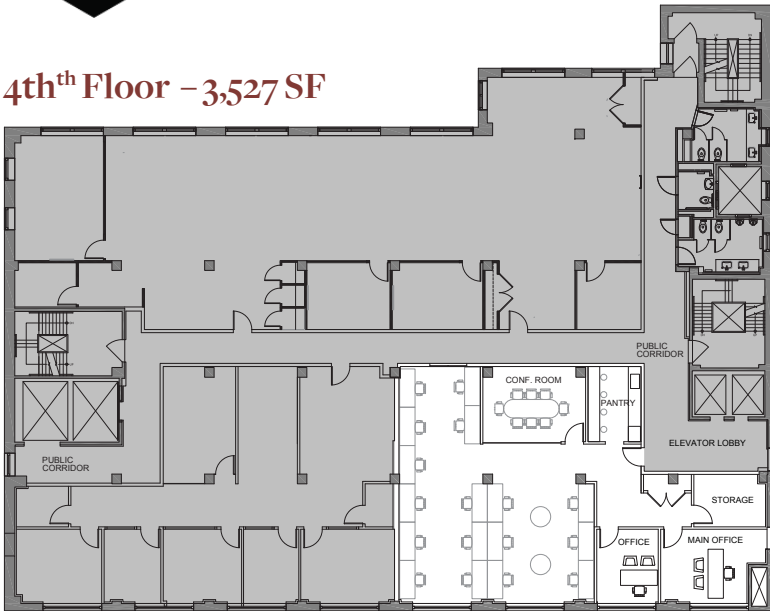




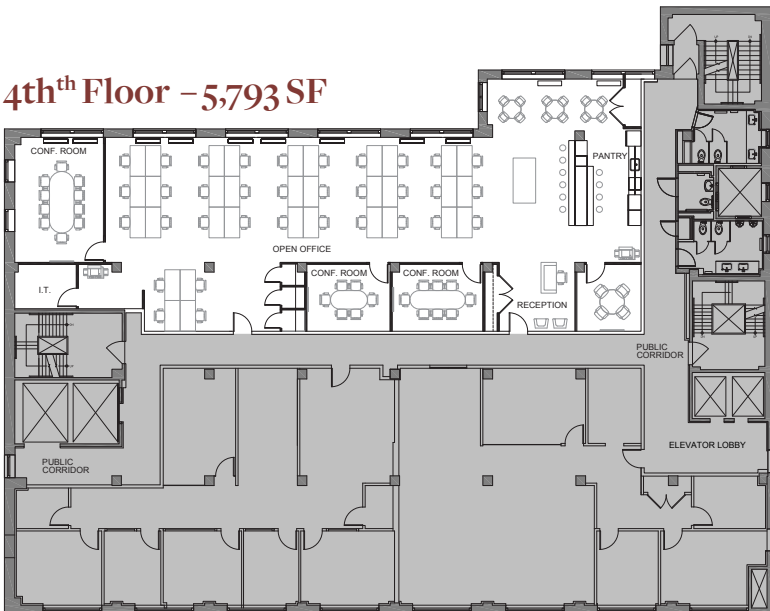
4thth Floor – 3,527 SF



Furnished 4th Floor Office Suite Now Available

3,527 rentable square feet fully furnished, plug and play office suite in Chelsea. Space features large operable windows, private windowed offices, open seating area and over 12'6" exposed ceilings. Accessible by elevators in both the east and west lobbies.

4thth Floor – 5,793 SF



Fully Furnished Flexible Office Space Now Available

5,793 rentable square feet of fully furnished, bright and airy loft office space in Chelsea. Space features large open seating areas, over 12'6" exposed ceilings and polished concrete floors. Accessible by elevators in both the east and west lobbies. Space plug and play.

For more information, please contact the exclusive agents:

Aaron Marcus | AMarcus@LexinCapital.com

Metin Negrin | MNegrin@LexinCapital.com



(212) 750-3500



info@229nyc.com



229 West 28th St
New York, NY 10001